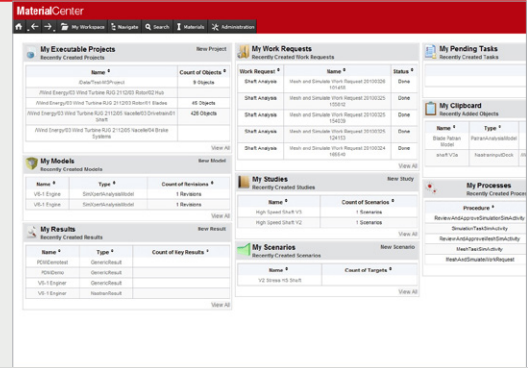


MaterialCenter™

Materials Lifecycle Management



What is MaterialCenter?

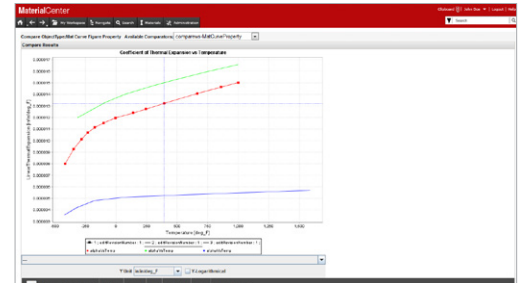
MSC Software's MaterialCenter – a Materials Lifecycle Management System – is designed to link material specialists to engineering simulation. A process and data management system, MaterialCenter automatically captures the data from integrated processes ensuring full traceability across the enterprise and throughout the product lifecycle. MaterialCenter addresses the unique requirements of exponential growth of complex materials in driving product innovation (plastics, composites) MaterialCenter works directly with many commercial CAE products including include many of MSC's flagship products, MSC Nastran, MSC Fatigue, Marc, Fatigue Testing Services, and e-Xstream Digimat.

Why is MaterialCenter Right for Your Company Today?

Drawn from the collective experience of the world's largest OEM's, MaterialCenter is the single point of entry for all of your materials related activities including physical test data entry and reduction, multi-scale materials modeling, approval workflow and the export of simulation-ready data to analysis. This guarantees that engineers are using a consistent source of approved materials derived from traceable integrated processes. The result is improved simulation fidelity, reduced data loss and elimination of tedious manual data management activities, empowering engineers to focus on driving new and innovative products. Proven scalability to 100,000's of processes and petabytes of data ensures that MaterialCenter meets the needs of material and simulation engineers alike for many years to come.

Drive Engineering Innovation Through Materials Advantage

- Dashboards enable quick evaluation of materials data management projects and management oversight.
- Work request and approval workflow keep projects on track.
- All materials-related processes, input and output are documented via Audit Trail.
- Process-oriented, automation approach to data management implemented to minimize manual data entry activities.
- Robust and intuitive interface for data search, retrieval and comparison for all data types – tabular, curves, images, etc.
- Web-based interface to data management processes enables distributed data authoring and maintenance.
- Built-in job queue interface optimizes execution of materials simulation processes.



The screenshot shows a table of materials. The table has columns for Name, Status, and various material properties. The 'Name' column lists materials like 'Steel 4140', 'Aluminum 7050', and 'Titanium 6Al-4V'. The 'Status' column shows 'Active' or 'Inactive'. The table is part of a larger interface with navigation and search options.

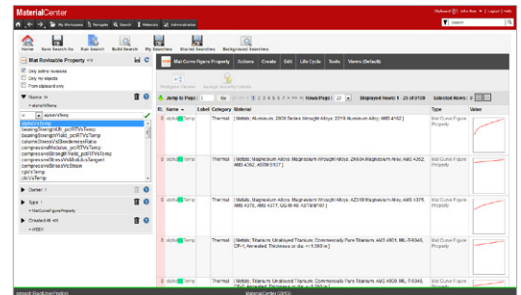
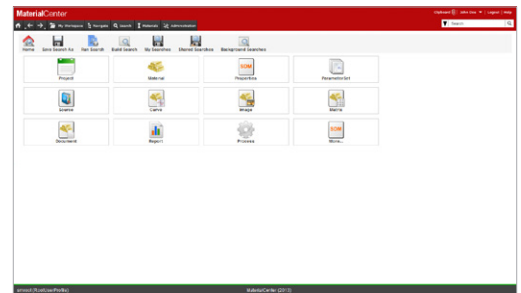
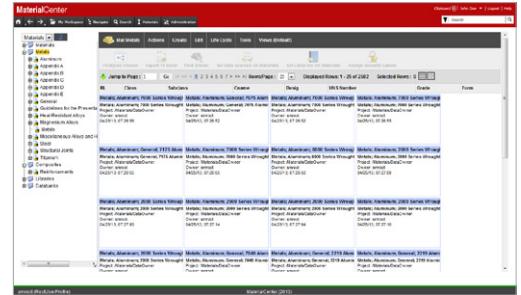
The screenshot shows a detailed table of simulation results. The table has columns for Name, Status, and various simulation parameters. The 'Name' column lists simulation names like '7050 Steel W/High', '7050 Aluminum Alloy', and '6061 Aluminum Alloy'. The 'Status' column shows 'Active' or 'Inactive'. The table is part of a larger interface with navigation and search options.

Integrated Processes That Ensure Traceability of Materials Decisions Throughout Product Lifecycle

- Deep integration with Excel, Digimat, and other 3rd party applications that support materials data processing.
- Bi-Directional REST API supports Integrated access to MaterialCenter from MSC applications, and other 3rd party applications.
- PDM integration using PROSTEP OpenPDM technology.
- Leverages existing hardware and software infrastructure.
- Auto-capture of all data transactions ensures easy resolution of materials-related liability issues and material substitution decisions.
- Bi-directional integration ensures that both data transmission and capture are archived and are usable and available for comparison and validation.
- Proven rapid deployment methodology ensures immediate productivity gains.
- Support for the common material data exchange format (MatML) from the National Institute of Standards and Technology.

Proven Scalability to Meet the Demands of Integrated Computational Methods Engineering (ICME)

- Built on a framework adopted by industry leaders in automotive, aerospace, consumer goods, electronics, shipbuilding and other industries.
- Proven performance scalability supporting thousands of users globally.
- Configurable to support multiple global locations.
- Web-based configuration enables fast deployment and minimizes IT support.



Corporate
 MSC Software Corporation
 4675 MacArthur Court
 Suite 900
 Newport Beach, CA 92660
 Telephone 714.540.8900
www.mscsoftware.com

Europe, Middle East, Africa
 MSC Software GmbH
 Am Moosfeld 13
 81829 Munich, Germany
 Telephone 49.89.431.98.70

Asia-Pacific
 MSC Software Japan LTD.
 Shinjuku First West 8F
 23-7 Nishi Shinjuku
 1-Chome, Shinjuku-Ku
 Tokyo, Japan 160-0023
 Telephone 81.3.6911.1200

Asia-Pacific
 MSC Software (S) Pte. Ltd.
 100 Beach Road
 #16-05 Shaw Towers
 Singapore 189702
 Telephone 65.6272.0082



The MSC Software corporate logo, MSC, and the names of the MSC Software products and services referenced herein are trademarks or registered trademarks of the MSC Software Corporation in the United States and/or other countries. All other trademarks belong to their respective owners. © 2015 MSC Software Corporation. All rights reserved.