

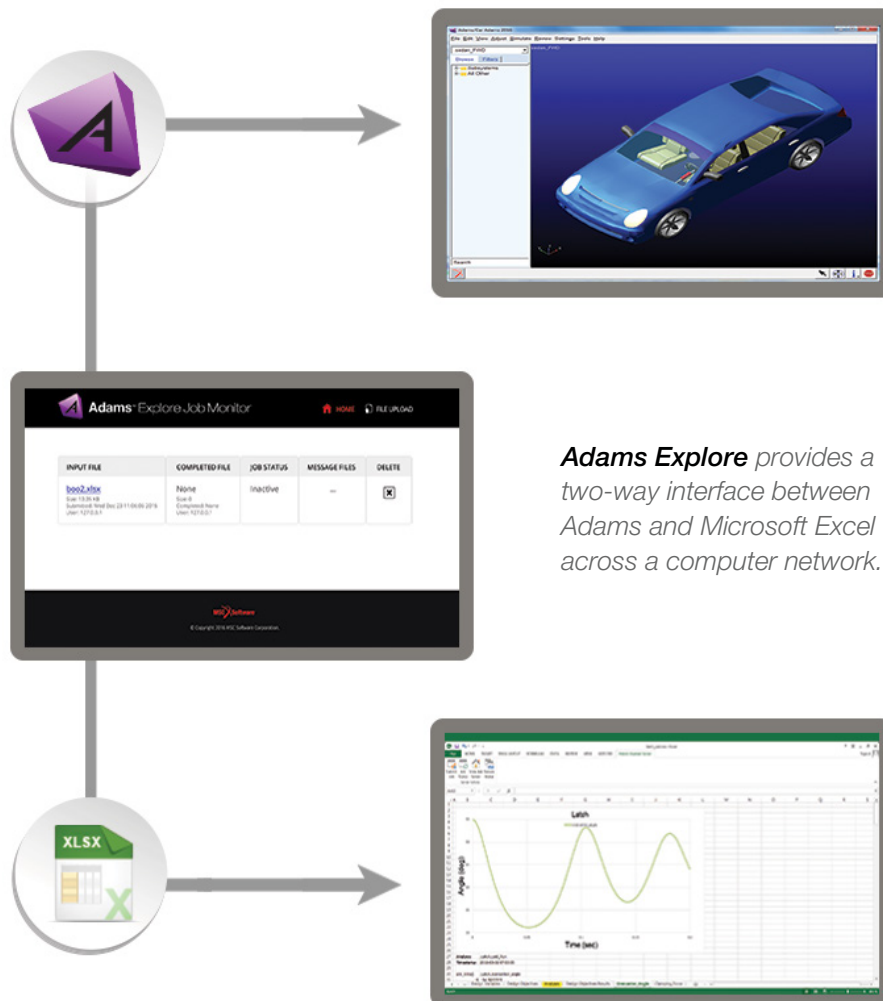
Adams Explore

The Power of Adams, Within Excel

Why Use Adams Explore? Empower Design Decisions.

Exploring and validating the behavior of dynamic systems using Adams is a common task for Simulation Engineers in leading companies worldwide. It is often the case that Design, or Release, Engineers need to investigate product changes or certify final designs; these experts may not be familiar with Adams but they are likely comfortable with Microsoft Excel.

Adams Explore is the link that connects these two worlds together: Analysts create detailed Adams models and Adams Explore provides a seamless workflow for Designers exploring changes from within Excel.

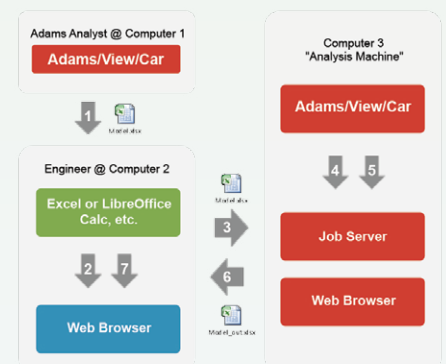


Adams Explore provides a two-way interface between Adams and Microsoft Excel across a computer network.

Get Started with Adams Explore

1. Navigate to the Design Exploration Tab and click the button in the Explore container. A dialog box will open in which all of the required data can be entered. A detailed description of the content that can be put into the dialog box can be found in the user guide.
2. Upon completing the dialog, the Adams analyst exports the workbook file to disk. The workbook contains information about where the model is located, where Adams is installed, which parameters are subject to change and which analyses can be run. Also added are responses of interest such as plot curves and design objectives.
3. The Adams analyst then sends the workbook via email to a colleague. The colleagues does not need Adams installed on their own machine.
4. This colleague then opens the workbook (using Microsoft Excel, Google Docs or similar) and edits the parameters of interest.

(Continued on page 2...)

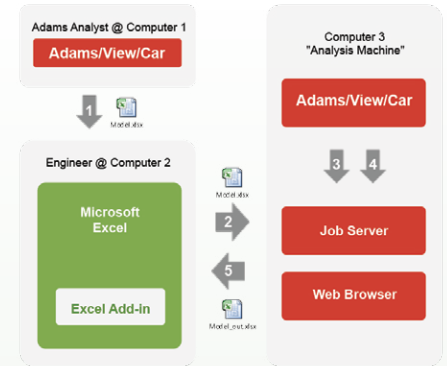
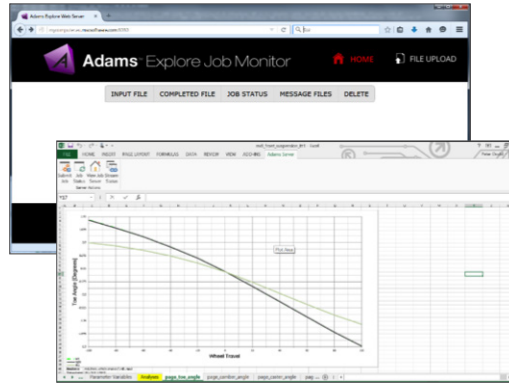


What is Adams Explore?

Adams Explore provides a two-way interface between Adams and Excel across a computer network. This enables a workflow whereby an Adams analyst exports a spreadsheet workbook defining key model parameters and analysis outputs. This workbook is shared with a non-Adams user who could, wholly from within Excel, modify the parameters, launch analyses, view the updated outputs and further post-process them.

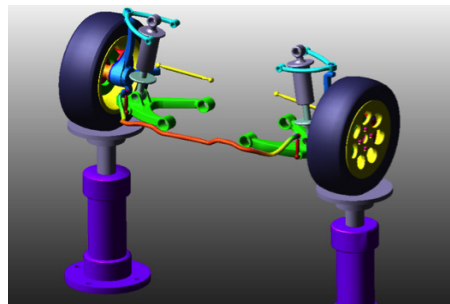
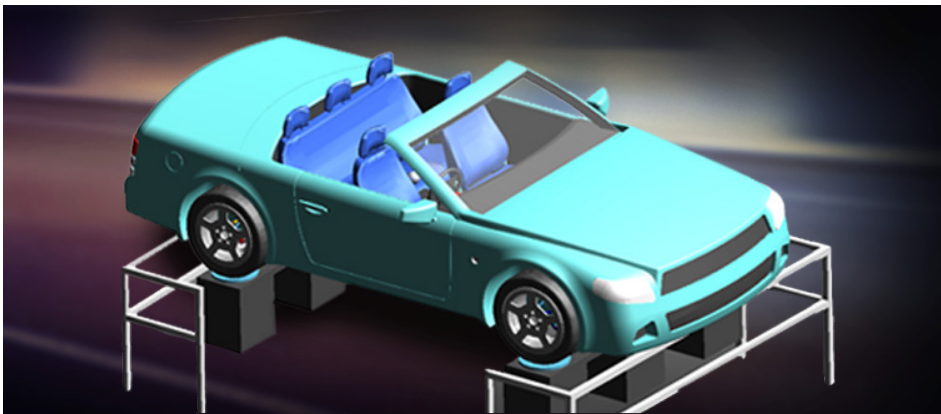
The model itself is not contained in the exported workbook. Instead, the workbook file contains references to the Analyst's machine along with information about the specific entities exported and analyses to be performed.

Detailed simulation models, representing a company's valuable intellectual property, are thus available to a much broader engineering community.



A hyperlink in the workbook directs the user to a webpage used for uploading the document to the Analyst's machine.

5. On this webpage the spreadsheet file is uploaded and received by the server which has been started previously on the Analyst's machine.
6. The web server provides an interactive status of the analysis progress.
7. Upon simulation completion an output workbook is created and made available for download via the webpage.
8. The engineer downloads the completed workbook and inspects the outputs of interest to assess the fitness of a particular design.



Get Started Today

Contact your MSC Account Manager for a demonstration or trial of Adams Explore. Or, feel free to ask about our services to help you get started. For more information, visit: www.mscsoftware.com

Corporate
MSC Software Corporation
4675 MacArthur Court
Suite 900
Newport Beach, CA 92660
Telephone 714.540.8900
www.mscsoftware.com

Europe, Middle East, Africa
MSC Software GmbH
Am Moosfeld 13
81829 Munich, Germany
Telephone 49.89.21093224
Ext. 4950

Japan
MSC Software LTD.
Shinjuku First West 8F
23-7 Nishi Shinjuku
1-Chome, Shinjuku-Ku
Tokyo, Japan 160-0023
Telephone 81.3.6911.1200

Asia-Pacific
MSC Software (S) Pte. Ltd.
100 Beach Road
#16-05 Shaw Towers
Singapore 189702
Telephone 65.6272.0082



The MSC Software corporate logo, MSC, and the names of the MSC Software products and services referenced herein are trademarks or registered trademarks of the MSC Software Corporation in the United States and/or other countries. All other trademarks belong to their respective owners. © 2016 MSC Software Corporation. All rights reserved.